



#### Officers

Ed Logan, President	423-444-9826
Jim Montgomery, Vice President	423-234-0441
Karen Simmering, Treasurer	423-639-1815
Sharon Anderson, Secretary	423-913-4921
Jim Bollman, Newsletter	315-589-8815

#### Board of Directors

Dave Simmering, Past President	423-639-1815
Bob Zimmerman	423-787-7768
Vacancy - Any Volunteers	



**Ed caught this couple posing at the Kinser Park Car Show a few weeks ago  
Fundraiser for Vol Firemen - 60-70 cars in attendance**



## Next Meeting: Canceled

**We will be canceling our evening meetings till the Kung Flu Virus is under control and meeting restrictions have been lifted**

### Signs of Aging:

- You don't care where your spouse goes, as long as you don't have to go along.
- You are cautioned to slow down by your doctor instead of the police.
- 'Getting a little action' means you don't need to take any fiber today.
- 'Getting lucky' means you find your car in the parking lot.
- ...and 'an all-nighter' means not getting up to go to the bathroom.

### Neglected Car of the Month



Found this one on an AACA Forum. Could use a good caption, like -

That Plymouth was the project from Hell, here it is escaping.

Anyone have a good caption?

## Cars & Coffee - Canceled

We are cancelling Cars & Coffee till restaurants get back to normal. Stay safe.

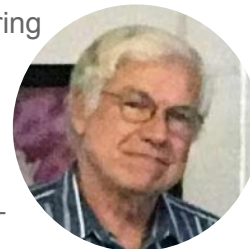


### Editor's Comments

Thanks to Ed & Darlene for sharing their photos, Dick Stearn's sign history, Don for Trivia.

**This is your newsletter, contribute**

Jim Bollman <Jim@Bollman.com> -  
315-589-8815  
217 Chinquapin Ln, Jonesborough, TN 37659



## Parking Lot Supper ???

Last month's supper did have 3 member families show up between down pours.

Do we want to try again? As of now the Rice Box parking lot 2nd Friday Cruise is still on or we can just pick a place and date to gather like the Walmart parking lot over in the corner by the gas station where we often meet for trips. We need a member to spearhead the event if we are going to do it. Pick a date and location and let me know and I will send out an announcement.



## Birthday & Anniversary

### Happy Birthday To:

August	5	John Lingo
	19	Dodie Melton
	11	Charlene Wood
	14	Ed Logan

### Happy Anniversary To:

August	5	Ken & Dianne Foster
--------	---	---------------------



## Crosley Virtual Shows

Last month I had an article on the Crosley Nationals being canceled in July, and how we decided to put on a virtual show to try and fill in the gap a little. Well it was a great success with lots of positive comments from both Crosley Club members and other car people. Here are a few highlights. 161 registered participants, 160 exhibits, they paid \$5 to register and got a dash plaque and each could enter 2 exhibits. An exhibit was either cars in any of 10 classes or in our Picture (photo of anything Crosley related including art), Non Automotive (Crosley made a lot of things besides cars) or Automotive Related Class (not a full car). We also had a 14th class that was for cars that won in the last 3 years, these are automatic trophy winners and pulled into their own class so other cars have a chance to win. We also had several special trophies, for a total of 50 trophies awarded. All voting was done electronically by registered members. To add to show we had some of our major vendors do video tours of their business, Tech Tip Videos and some Fun videos from members. Here are a few of the Winners.



[Click to  
go to  
online  
show](#)







## Why do stop signs have 8 sides? - Dick Stearn (friend from my Drumlin AACA Region)

In the dawn of the motor vehicle age, there were no stop signs. As autos became more numerous on the roads of the era, local municipalities found it necessary to become involved with various means of traffic control for reasons of public safety. One of the first traffic control devices was the stop sign. Each jurisdiction had its own design and there was no standardization.

At the turn of the 20th century, American roads were chaos. Drivers didn't need a license, lane lines didn't exist, and stop signs hadn't yet been invented.

The first stop sign debuted in Detroit in 1915 but looked nothing like the ones we are bombarded with on roads today. In 1923, folks who worked for Mississippi's highway department suggested a new sign. One that would give drivers a heads-up that a potential hazard might be just up the road. The idea they came up with was that the more sides a sign had, the more dangerous was the road ahead.



A circle (considered to have infinite sides) denoted the riskiest stretches of road, such as railroad crossings.



They started switching to red/white in 1954

Continue Page 5

It was decided that the 8-sided octagon would represent a sign for intersections, the next level of potential danger. Diamond-shaped signs were next in line, followed by rectangles which are used only for information.

In case you haven't noticed, we still use all these sign shapes today.

Next time you're driving, think back to a time when the roads were essentially lawless, and thank those folks in Mississippi who had the foresight to try to keep us all safe.

Former signs



New sign



As the illustration at above shows, our highway signs are still evolving. The use of universal graphics instead of words is becoming wide spread.

This image is another example of the evolution of our road signs. Does anyone else remember the stop sign above left with the glass beads for reflection to aid night time driving? Needless to say, this was before the



days of Scotchlite® reflective materials which are almost universal for our modern road signs.

This is but a small sample of the variations our highway signs have undergone over the years but, stop signs still have 8 sides.

*Some material from "Did you know facts", "Mental Floss", and "Vintage Highway Signs"*

## Remember When



15 Cent Hamburgers - 1st McDonalds

## Montgomery's Gatlinburg Getaway



Interesting Restaurant They Stopped at



## Dogs Life

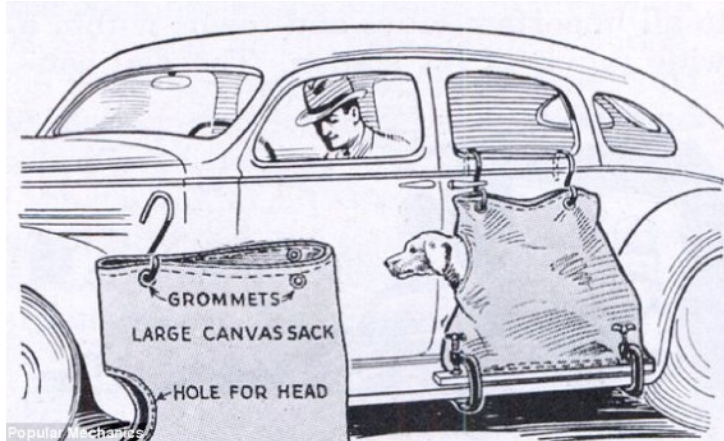
I keep running into interesting old car/dog pictures so thought I would feature dog pictures this month. Enjoy.



When you drive a Caddy your dog goes in style

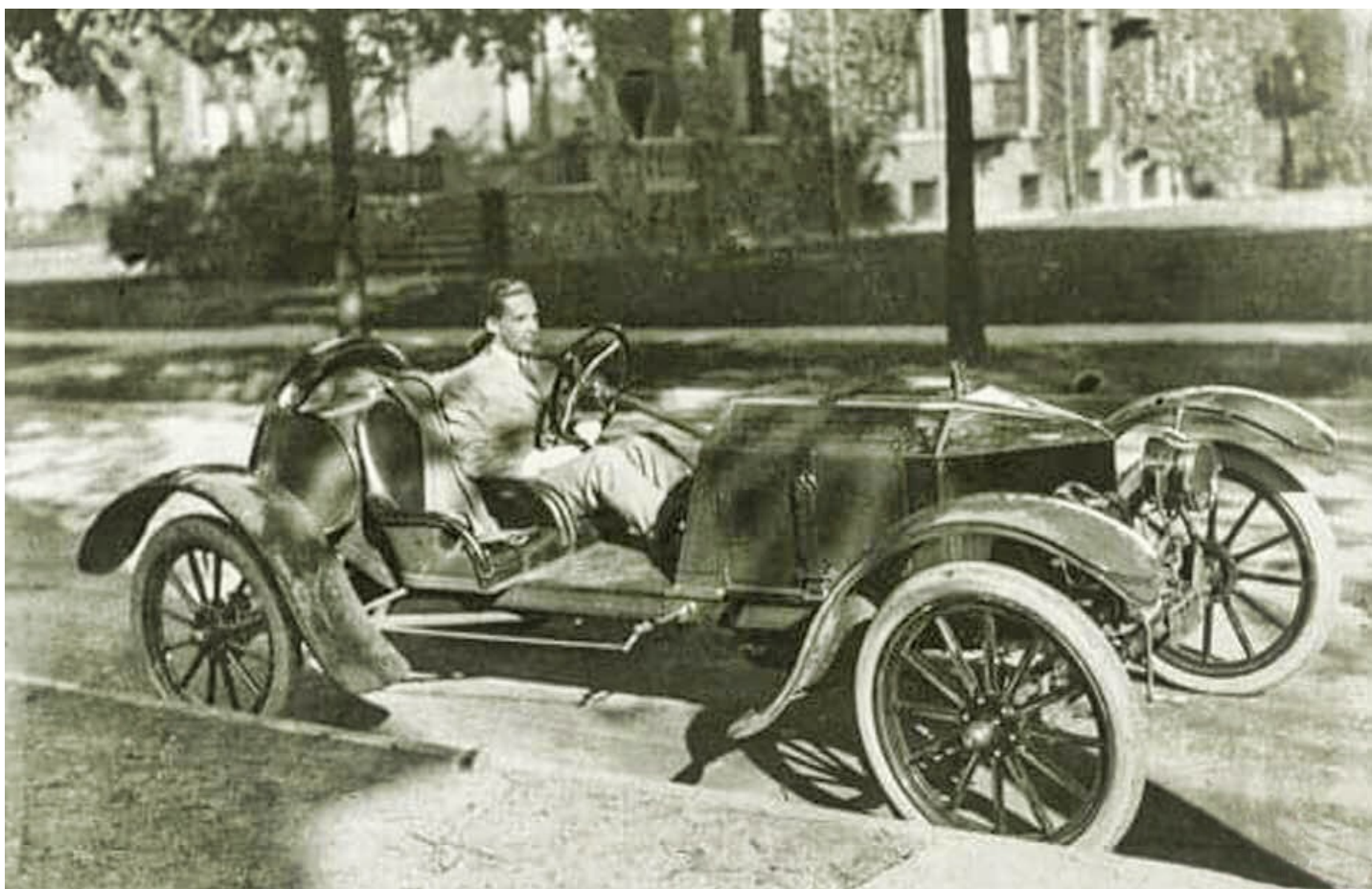


The other end



I named my dog "5 miles" so I could say  
"I walked 5 miles"

## Young Edsel Ford??



Underneath that "special", is a mostly model T chassis. The driver? None other than a young Edsel Ford, sitting in one of his first automotive creations. The car was rebuilt and redesigned several times, gaining a more complete body, and better lines. The engine. Somewhat of an unknown. Around this same time, Henry Ford had a special engineering department that built several (exact number is not known) special engines used in "special" racing cars made to look like common model T chassis, but with the special engines providing greater horsepower and designed to just fit into common racing categories. One engine actually had less displacement than the standard model T so it could be raced in a category the standard Ford was too large for! It has been postulated that this car may have had one of those special high horsepower engines. Several people have tried researching this car, both how it appears here, and in the forms it later became. Solid answers seem to be in short supply for it. (Picture and description found on the Internet, it must be true.)

### Auto Trivia

**Q: Who opened the first drive-in gas station?**

**Q: What city was the first to use parking meters?**

**Q: Where was the first drive-in restaurant?**

**Answers Page 8**



### City Garage Car Museum

210 South Main Street  
Greeneville, TN 37743

(423) 470-0841

638-6971/639-3217

info@citygaragecarmuseum.com

Open Wednesday - Saturday 10:00 am - 4:00 pm

Optional Scheduling on Request and Special Events



### Vehicles & Related Items For Sale

**Model A & T Fords & Parts For Sale,**  
Call Mike 423-743-5085

Ads will appear in one issue unless the editor is  
contacted to run again - [jim@Bollman.com](mailto:jim@Bollman.com)

### Answers from Page 7

A: Royce Hailey's Pig Stand opened in Dallas in 1921.

A: First Meters - Oklahoma City, on July 16, 1935.

A: Gulf opened up the first station in Pittsburgh in 1913.

**Free Open To Public**

HOT RODS CLASSIC VINTAGE EXOTICS

**THE TENNESSEE GREAT AMERICAN GOD & COUNTRY Car & Custom Cycle Show**

(OPEN TO ALL YEARS AND MODELS)

UNIVERSITY PARKWAY BAPTIST CHURCH  
219 UNIVERSITY PARKWAY JOHNSON CITY, TN

SATURDAY, AUGUST 1ST, 2020 10AM-4PM

ENTRY FEE \$15 PRIOR TO DAY OF SHOW, \$15 DAY OF SHOW  
YOU MAY GO ONLINE TO ENTER AND PAY ENTRY FEE

ICAPTIST.ORG (THIS IS A SECURE SITE)

DRAWINGS FOR \$1,000 IN PRIZE MONIES PLUS TROPHIES WILL  
BE AWARDED IN EACH CLASS

CALL 926-5841

FOOD WILL BE AVAILABLE ON SITE!

**Rain Date: August 15th**

No Tobacco or Alcohol Use On Premises

**Has Been Canceled Until a Later Date**

Date	Upcoming Event	More Info
08/01	The TN Great American God & Country Car Show 219 University Parkway Johnson City TN	8/15 Rain Date; \$15 Registration (See Above for more details)
08/15	18th Annual Shadow of the Mountains Shine and Show Newport City Park off Hwy 321 North at 240 Smith St Good Times Cruisers Car Club - High School Scholarship	\$15 dollars before August 1st - After \$20 423-623-5157
08/22	Fifth annual Sundown on Depot Returns to historic downtown Greeneville	\$10/Vehicle; 10am to 6pm Awards at 5pm Proceeds to Holston United Methodist Home for Children
09/11	Baileyton Celebration - Cruse-In Baileyton Elementary School - Reg 4pm Show 5-9pm	\$15 dollars before Sept 1st - After \$20
<b>Bold Print is Davy Crockett Regional Event</b>		

When	Cruise-ins - Event	More Info
Saturdays	Burnout BBQ & Grille - 857 Rock Creek Rd, Erwin	5-8pm Social Distancing & Responsible
July - Oct Saturday 5:00	Cruise-ins, downtown Elizabethton TN	cartercountycarclub.com
2nd Fridays	Greeneville Cruse-In at RiceBox parking lot	6-8pm
July - Till ?? - Fridays	Jonesborough Hardie's on Rt 11	Friday Evenings